

# How to do FASHION

Size chart EU/UK/US												
	32/4/0	34/6/2	36/8/4	38/10/6	40/12/8	42/14/10	44/16/12	46/18/14	48/20/16	50/22/18	52/24/20	54/26/22
<b>CHEST</b>												
CM	80	84	88	92	96	101	106	112	118	124	131	138
INCH	31.5	33.1	34.6	36.2	37.8	39.8	41.7	44.1	46.5	48.8	51.6	54.3
<b>WAIST</b>												
CM	62	66	70	74	78	83	88	94	100	106	113	120
INCH	24.4	26.0	27.6	29.1	30.7	32.7	34.6	37.0	39.4	41.7	44.5	47.2
<b>HIP</b>												
CM	90	94	98	102	106	111	116	122	128	134	141	148
INCH	35.4	37.0	38.6	40.2	41.7	43.7	45.7	48.0	50.4	52.8	55.5	58.3



## HOW TO MEASURE

Chest - measure around your full bust  
 Waist - measure at the narrowest point  
 Hip - Measure at the widest point

All measurement  
 have to be horizontal

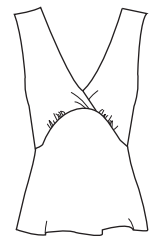
Finished measurement No.19 NEW YORK VERSION 1												
	32/4/0	34/6/2	36/8/4	38/10/6	40/12/8	42/14/10	44/16/12	46/18/14	48/20/16	50/22/18	52/24/20	54/26/22
<b>CHEST APROX.</b>												
CM	84	88	92	96	100	105	110	116	122	128	135	142
INCH	33.1	34.6	36.2	37.8	39.4	41.3	43.3	45.7	48.0	50.4	53.1	55.9
<b>WAIST</b>												
CM	66	70	74	78	82	87	92	98	104	111	117	124
INCH	26.0	27.6	29.1	30.7	32.3	34.3	36.2	38.6	40.9	43.7	46.1	48.8
<b>HIP</b>												
CM	94	98	102	106	110	115	120	126	132	138	145	152
INCH	37.0	38.6	40.2	41.7	43.3	45.3	47.2	49.6	52.0	54.3	57.1	59.8
<b>LENGTH FROM TOP OF SHOULDER TO BOTTOM</b>												
CM	138.6	140.2	141.8	143.4	145	146.6	148.2	149.8	151.4	153	154.6	156.2
INCH	54.6	55.2	55.8	56.5	57.1	57.7	58.3	59.0	59.6	60.2	60.9	61.5
<b>FULL BOTTOM MEASUREMENT</b>												
CM	178	182	186	190	194	200	206	212	218	224	230	236
INCH	70.1	71.7	73.2	74.8	76.4	78.7	81.1	83.5	85.8	88.2	90.6	92.9

VERSION 1



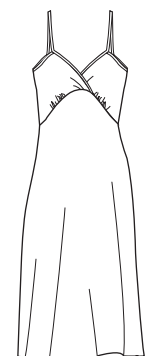
Finished measurement No.19 NEW YORK VERSION 2												
	32/4/0	34/6/2	36/8/4	38/10/6	40/12/8	42/14/10	44/16/12	46/18/14	48/20/16	50/22/18	52/24/20	54/26/22
<b>CHEST APROX.</b>												
CM	84	88	92	96	100	105	110	116	122	129	135	141
INCH	33.1	34.6	36.2	37.8	39.4	41.3	43.3	45.7	48.0	50.8	53.1	55.5
<b>WAIST</b>												
CM	66	70	74	78	82	87	92	98	104	110	117	124
INCH	26.0	27.6	29.1	30.7	32.3	34.3	36.2	38.6	40.9	43.3	46.1	48.8
<b>FULL BOTTOM MEASUREMENT/ HIP</b>												
CM	94	98	102	106	110	115	120	126	132	138	145	152
INCH	37.0	38.6	40.2	41.7	43.3	45.3	47.2	49.6	52.0	54.3	57.1	59.8
<b>LENGTH FROM TOP OF SHOULDER TO BOTTOM</b>												
CM	60.7	61.9	63.1	64.3	65.5	66.7	67.9	69.1	70.3	71.5	72.7	73.9
INCH	23.9	24.4	24.8	25.3	25.8	26.3	26.7	27.2	27.7	28.1	28.6	29.1

VERSION 2



Finished measurement No.19 NEW YORK VERSION 3												
	32/4/0	34/6/2	36/8/4	38/10/6	40/12/8	42/14/10	44/16/12	46/18/14	48/20/16	50/22/18	52/24/20	54/26/22
<b>CHEST</b>												
CM	84	88	92	96	100	105	110	116	122	128	135	142
INCH	33.1	34.6	36.2	37.8	39.4	41.3	43.3	45.7	48.0	50.4	53.1	55.9
<b>WAIST</b>												
CM	68	72	76	80	84	89	94	100	106	112	119	126
INCH	26.8	28.3	29.9	31.5	33.1	35.0	37.0	39.4	41.7	44.1	46.9	49.6
<b>HIP</b>												
CM	94	98	102	106	110	115	120	126	132	138	145	152
INCH	37.0	38.6	40.2	41.7	43.3	45.3	47.2	49.6	52.0	54.3	57.1	59.8
<b>FULL BOTTOM MEASUREMENT</b>												
CM	140	144	148	152	156	162	168	174	180	186	192	198
INCH	55.1	56.7	58.3	59.8	61.4	63.8	66.1	68.5	70.9	73.2	75.6	78.0
<b>LENGTH FROM TOP OF DRESS TO BOTTOM EX. STRAPS</b>												
CM	86.5	88.2	89.9	91.6	93.3	95	96.7	98.4	100.1	101.8	103.5	105.2
INCH	34.1	34.7	35.4	36.1	36.7	37.4	38.1	38.7	39.4	40.1	40.7	41.4

VERSION 3



LENGHT FOR BIASTAPE VERSION 3												
	32/4/0	34/6/2	36/8/4	38/10/6	40/12/8	42/14/10	44/16/12	46/18/14	48/20/16	50/22/18	52/24/20	54/26/22
CM	108	113	118	123	128	133	138	143	148	153	160	167
INCH	42.5	44.5	46.5	48.4	50.4	52.4	54.3	56.3	58.3	60.2	63.0	65.7